

Yeebo Europe

Office 105, Devonshire House,
Aviary Court, Basingstoke, RG24 8PE,
Tel: +44 (0) 203 287 6886

Yeebo manufactures capacitive touch panels (CTP) at a brand new highly automated facility in Jiangmen China, alongside our robotic TFT lines.

This includes the following types:

OGS One Glass Solution

G+G Glass cover lens + glass sensor

G+F Glass cover lens + film sensor

Also offered is a variety of cover lens surface treatments such as AR etc.

Automated OCA optical bonding is also available for outdoor applications and to minimize internal reflections. This improves performance and potential fogging when used outdoors. As Yeebo can offer both the processing and principal materials in-house, we can guarantee long term availability.

Most significant is that Yeebo produces in-house ITO (Indium-Tin-Oxide) coated glass with highly controlled sheet resistance.

Yeebo has heavily invested in 3rd generation state of the art, automated inline ITO coating sheet processing. With the unique technology of OGS Yeebo can offer a real cost advantage over other CTP technologies.

The technology is highly flexible, especially for full custom designs combining touch panel and cover lens in a single sheet. This avoids the need for optical bonding between sensor and cover lens further reducing cost.



Yeebo Europe

Office 105, Devonshire House,
Aviary Court, Basingstoke, RG24 8PE,
Tel: +44 (0) 203 287 6886

Yeebo Displays Ltd, a public Company in Hong Kong is a major producer of industrial grade TFT modules.

We have a fully automated TFT facilities in Jiangmen China capable of manufacturing four million TFT modules per month.

Our industrial panels have long term availability and are of the highest quality. We offer integrated OGS capacitive touch panels and full technical integration support. OCR and OCA available for applications where high levels of humidity exist.

TFT modules for Industrial Display Solutions.



5" TFT + OGS
■ Resolution 800 x 480

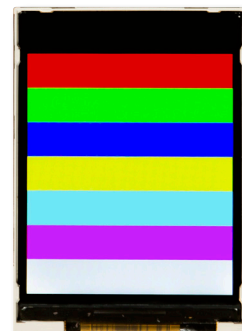
Yeebo Display Ltd Industrial TFT Displays



1.3" IPS Technology
■ Resolution 240 x 240



2.4" IPS Technology
(OGS CTP)
■ Resolution 240 x 320



2.8" IPS Technology
■ Resolution 240 x 320



3.5" TFT IPS Technology
■ Resolution 320 x 480



4.3" TFT IPS Technology
■ Resolution 480 x 272



7" TFT
■ Resolution 800 x 400

New Larger Size IPS TFT Modules with Capacitive Touch I²C or USB



YB-TG19201080S02A-C-A0	CONTENTS
Module Size	334.70(W) * 209.10(H) * 4.29(T)mm
Display Size (Diagonal)	13.3 inch
Brightness	410cd/m2
TFT Interface	2 Lane eDP 1.2
Viewing Direction	ALL

YB-TG19201080C01A-C-A1	CONTENTS
Module Size	383.70(W) * 248.00(H) * 8.10(T)mm
Display Size (Diagonal)	15.6 inch
Brightness	590cd/m2
TFT Interface	EDP
Viewing Direction	ALL

YB-TG19201080C02A-C-A0	CONTENTS
Module Size	294.60(W) * 196.50(H) * 7.70(T)mm
Display Size (Diagonal)	11.6 inch
Brightness	595cd/m2
TFT Interface	EDP
Viewing Direction	ALL

YB-TG1280800S07A-C-A0	CONTENTS
Module Size	241.96(W) * 175(H) * 4.65(T)mm
Display Size (Diagonal)	10.1 inch
Brightness	696cd/m2
TFT Interface	LVDS
Viewing Direction	ALL